

Cabinet Handles 2020

Stefano Orlati 

122



● BN ● MC

Centre (mm)	Length (mm)	Height (mm)	Width (mm)
160	180	26	18

410

● MB ● MC ● BN
● PC ● SC ● BLKN

Centre (mm)	Length (mm)	Height (mm)	Width (mm)
96	112	28	10
128	144	35	10
224	288	37	10

684



● CMB

Centre (mm)	Length (mm)	Height (mm)	Width (mm)
K	32	25	32
96	119	25	21
128	151	25	23

1037

● BN ● MC ● CH
● PB ● SB

Centre (mm)	Length (mm)	Height (mm)	Width (mm)
128	158	29	10

3130



● BN ● MB ● WH

Centre (mm)	Length (mm)	Height (mm)	Width (mm)
128	147	30	18
192	222	30	18
256	275	30	18
416	430	30	18

3380



● BN ● T

Centre (mm)	Length (mm)	Height (mm)	Width (mm)
128	151	28	25
160	189	28	25
224	260	33	25
320	358	33	25
416	463	38	25

7025



● BN ● MC

Centre (mm)	Length (mm)	Height (mm)	Width (mm)
128	138	25	20
160	170	28	20
224	234	28	20
320	330	28	20

7090



● BN

Centre (mm)	Length (mm)	Height (mm)	Width (mm)
96	138	36	16
128	168	36	16
160	200	36	16
256	296	36	16
320	360	36	16

TSB*

● MB ● BLKN ● BN
● CH ● MC ● SN

Centre (mm)	Length (mm)	Height (mm)	Width (mm)
96	111	29	10
128	150	30	10

616



● MB ● TG

Centre (mm)	Length (mm)	Height (mm)	Width (mm)
96	114	23	17
128	150	27	21
192	226	31	23

782



● PC ● SC

Centre (mm)	Length (mm)	Height (mm)	Width (mm)
96	115	28	10
128	148	28	10

2060



● BN ● MC

Centre (mm)	Length (mm)	Height (mm)	Width (mm)
96	115	28	10
128	154	30	10

3319



● BN

Centre (mm)	Length (mm)	Height (mm)	Width (mm)
96	140	22	15
192	250	22	15

6329



● MB ● MBN

Centre (mm)	Length (mm)	Height (mm)	Width (mm)
128	167	26	22
192	231	26	22
256	295	26	22
320	359	27	22

7039



● BN

Centre (mm)	Length (mm)	Height (mm)	Width (mm)
128	160	25	22
160	190	25	22
256	286	25	22
320	350	25	22

7127



● BN

Centre (mm)	Length (mm)	Height (mm)	Width (mm)
128	148	29	10
160	180	29	10
256	276	29	10
320	340	29	10

7165



Centre (mm)	Length (mm)	Height (mm)	Width (mm)
96	136	25	25
128	168	25	25
160	200	25	25
256	296	28	25

● BN

7206



Centre (mm)	Length (mm)	Height (mm)	Width (mm)
128	138	14	25
160	170	14	25
256	266	14	25
320	330	14	25

● MB ● PA

7232



Centre (mm)	Length (mm)	Height (mm)	Width (mm)
128	165	28	12
160	197	29	12
320	344	32	12

● BN

7236



Centre (mm)	Length (mm)	Height (mm)	Width (mm)
128	248	25	16
160	272	25	16
320	410	25	16

● BN

9718



Centre (mm)	Length (mm)	Height (mm)	Width (mm)
128	200	30	12

● BN ● MC

9910



Centre (mm)	Length (mm)	Height (mm)	Width (mm)
96	114	21	10
128	150	27	12

● BN ● MC

C



Centre (mm)	Length (mm)	Height (mm)	Width (mm)
128	148	26	10
160	180	26	10
192	212	26	10

● BN ● FS ● MB

7179



Centre (mm)	Length (mm)	Height (mm)	Width (mm)
96	124	24	19
128	157	27	19
160	189	28	19
256	286	30	19

● BN

7229



Centre (mm)	Length (mm)	Height (mm)	Width (mm)
128	170	32	12
160	202	34	12
320	362	32	12

● BN

7235



Centre (mm)	Length (mm)	Height (mm)	Width (mm)
128	163	27	16
160	204	26	16
320	372	26	16

● BN

7530



Centre (mm)	Length (mm)	Height (mm)	Width (mm)
16	42	24	28
64	100	24	20
96	132	24	20
128	164	24	20
224	268	24	20

● MB ● TG

9908



Centre (mm)	Length (mm)	Height (mm)	Width (mm)
96	105	30	13
128	147	30	14

● BN ● MC ● CH

ARC



Centre (mm)	Length (mm)	Height (mm)	Width (mm)
128	153	31	10
160	190	31	10
224	263	31	10
288	336	31	10

● BN



CAPRI-J



- FS ● CH ● MB
- MW ● TG ● G

Length (mm)	Height (mm)	Depth (mm)
3600	57.1	26

CAPRI-C



- FS ● CH ● MB
- MW ● TG ● G

Length (mm)	Height (mm)	Depth (mm)
3600	73.5	26

CAPRI-C LED



- FS ● CH ● MB
- MW ● TG

Length (mm)	Height (mm)	Depth (mm)
3600	76	24

CAPRI-Y



- FS ● CH ● MB
- MW ● TG ● G

Length (mm)	Height (mm)	Depth (mm)
2400	66	47

CAPRI-R



- FS ● CH ● MB
- MW ● TG ● G

Length (mm)	Height (mm)	Depth (mm)
3600	19	34.3

CAPRI-N



- FS ● CH ● MB
- MW ● TG ● G

Length (mm)	Height (mm)	Depth (mm)
3600	18	10.5

CAPRI J END CAPS



- FS ● CH ● MB
- MW ● TG ● G



For Capri J profiles

Handling
Left
Right

CAPRI C END CAPS



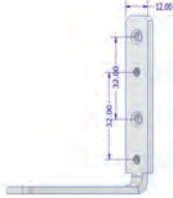
- FS ● CH ● MB
- MW ● TG ● G



For Capri C & Capri C LED profiles

Handling
Universal

CAPRI Profile Mounting Bracket



Handling
Universal

548



Centre (mm)	Length (mm)	Height (mm)	Width (mm)
128	170	26	17
192	235	26	17
320	362	26	17
544	588	26	17

- MB ● ABS

2163



- BC ● SB ● BA
- BN ● MB

Centre (mm)	Length (mm)	Height (mm)	Width (mm)
25	40	18	45
160	200	18	45
2x 128	300	18	45
2x 160	350	18	45

7130



- BN ● MB

Centre (mm)	Length (mm)	Height (mm)	Width (mm)
20	40	25	35
80	100	25	35
160	180	25	35
260	280	25	35

PESARO PULL



- ABS

Length (mm)	Height (mm)	Width (mm)
200	18	36
400	18	36
600	18	36
1250	18	36

R156



- FS ● ABS

Centre (mm)	Length (mm)	Height (mm)	Width (mm)
64	90	17	41
160	190	17	41



1186



● BSAT ● BSBN

Centre (mm)	Length (mm)	Height (mm)	Width (mm)
96	132	29	14
160	204	29	16

3440



● AC ● BN ● BSBN

Centre (mm)	Length (mm)	Height (mm)	Width (mm)
128	150	33	18
160	182	33	18
224	246	33	18
320	342	33	18

8392



● P

Centre (mm)	Length (mm)	Height (mm)	Width (mm)
128	188	28	21

8658



● CH ● MB
● AB ● BN

Centre (mm)	Length (mm)	Height (mm)	Width (mm)
96	132	25	16

Recessed

709*



● S ● MB ● WH

Centre (mm)	Length (mm)	Height (mm)	Width (mm)
128	138	13	30

Square

116



● BN ● MC

Centre (mm)	Length (mm)	Height (mm)	Width (mm)
128	159	29	15
160	190	29	15

298



● BN ● CH

Centre (mm)	Length (mm)	Height (mm)	Width (mm)
128	142	32	15
256	270	32	15

422



● BN ● MB ● TG

Centre (mm)	Length (mm)	Height (mm)	Width (mm)
64	76	30	18
160	173	30	18
320	333	30	18

1208



● BSAT ● BSBN

Centre (mm)	Length (mm)	Height (mm)	Width (mm)
96	135	31	34

8391



● P

Centre (mm)	Length (mm)	Height (mm)	Width (mm)
160	180	32	40

8407



● CH ● MB
● AB ● BN

Centre (mm)	Length (mm)	Height (mm)	Width (mm)
64	90	23	34

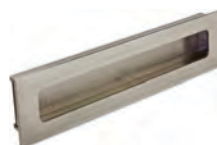
C15



● WHC/P

Centre (mm)	Length (mm)	Height (mm)	Width (mm)
128	150	40	23

AHS403



● FS ● ABS

Centre (mm)	Length (mm)	Height (mm)	Width (mm)
128	145	16	42
160	172	16	42

288



● BN

Centre (mm)	Length (mm)	Height (mm)	Width (mm)
128	141	36	16
160	173	36	16
224	237	36	16
288	301	36	16

305



● AC ● AI
● BN ● MC

Centre (mm)	Length (mm)	Height (mm)	Width (mm)
128	145	25	12
160	177	25	12
224	241	27	12
320	337	27	12

432



● PA

Centre (mm)	Length (mm)	Height (mm)	Width (mm)
64	120	32	23
160	210	32	23
320	355	32	23

454



- PA ● MB
- PG ● MBN

Centre (mm)	Length (mm)	Height (mm)	Width (mm)
160	168	40	16
320	326	40	16

690



- CH ● MC

Centre (mm)	Length (mm)	Height (mm)	Width (mm)
64	83	18	11

809



- BN

Centre (mm)	Length (mm)	Height (mm)	Width (mm)
160	178	18	12
256	274	20	12

1745



- BN ● MC

Centre (mm)	Length (mm)	Height (mm)	Width (mm)
128	137	28	21
192	201	28	21
256	265	28	21

3064*



- PB ● SB
- BN ● MC

Centre (mm)	Length (mm)	Height (mm)	Width (mm)
96	121	27	8
128	157	27	8
160	192	27	8
192	224	27	8
240	273	27	8
320	355	27	8

3447*



- BN ● MB

Centre (mm)	Length (mm)	Height (mm)	Width (mm)
128	158	25	20
160	192	25	22
192	226	25	25

5012



- BN

Centre (mm)	Length (mm)	Height (mm)	Width (mm)
96	156	30	12
128	188	30	12
160	220	30	12
256	316	30	12
320	380	30	12

5076



- BN ● MB ● CH

Centre (mm)	Length (mm)	Height (mm)	Width (mm)
128	138	29	10
192	202	29	10
256	266	29	10
320	330	29	10

663



- CG ● MB ● TG

Centre (mm)	Length (mm)	Height (mm)	Width (mm)
16	42	26	20
128	157	37	18

800



- SC ● PC

Centre (mm)	Length (mm)	Height (mm)	Width (mm)
76	84	32	9.5
96	106	32	9.5
128	138	32	9.5
160	170	32	9.5

1092



- BN ● CH
- MB ● MC

Centre (mm)	Length (mm)	Height (mm)	Width (mm)
96	102	27	11
128	134	27	11
160	168	27	11
224	230	27	11
288	294	27	11
320	326	27	11

3061



- BN ● MC

Centre (mm)	Length (mm)	Height (mm)	Width (mm)
128	158	25	20
192	226	27	24

3163



- BN ● MB

Centre (mm)	Length (mm)	Height (mm)	Width (mm)
96	121	25	8
128	161	25	8
160	193	25	8
192	225	25	8
240	273	25	8

4062



- BN ● MB ● TG

Centre (mm)	Length (mm)	Height (mm)	Width (mm)
96	104	28.3	8.3
128	136	28.3	8.3
160	168	28.3	8.3
192	200	28.3	8.3
256	264	28.3	8.3
320	328	28.3	8.3
416	424	28.3	8.3

5075



- CH ● SB ● PB
- TG ● MBN

Centre (mm)	Length (mm)	Height (mm)	Width (mm)
128	142	22	14
192	206	22	14
320	334	22	14

6330



- BN

Centre (mm)	Length (mm)	Height (mm)	Width (mm)
128	142	30	25
192	206	30	25
320	334	30	25

7011



Centre (mm)	Length (mm)	Height (mm)	Width (mm)
128	134	26	12
160	166	26	12
256	262	26	12
320	326	26	12
448	454	26	12

● BN ● CH

7120



Centre (mm)	Length (mm)	Height (mm)	Width (mm)
128	140	31	15
160	172	31	15
256	268	31	15

● BN

7141



Centre (mm)	Length (mm)	Height (mm)	Width (mm)
128	188	34	8
160	220	34	8
256	316	34	8
320	380	34	8
448	508	34	8

● BN

7292



Centre (mm)	Length (mm)	Height (mm)	Width (mm)
128	155	31	22
192	220	31	22
224	255	31	22

● AI ● TG

8230



Centre (mm)	Length (mm)	Height (mm)	Width (mm)
128	192	30	10
192	256	30	10
320	384	30	10
480	544	30	10

● ABS

7092/12



Centre (mm)	Length (mm)	Height (mm)	Width (mm)
96	106	30	12
128	138	30	12
160	170	30	12
256	266	30	12
320	330	30	12

● BN

B



Centre (mm)	Length (mm)	Height (mm)	Width (mm)
128	135	30	12
160	167	30	12
224	231	30	12
320	327	30	12

● BN ● MB ● FS

MH14



Centre (mm)	Length (mm)	Height (mm)	Width (mm)
96	110	29	7
128	141	29	7
224	238	29	7

● BN ● CH ● S

7105



Centre (mm)	Length (mm)	Height (mm)	Width (mm)
96	102	30	20
128	134	30	20
160	160	30	20
256	256	30	20
320	320	30	20

● BN

7128



Centre (mm)	Length (mm)	Height (mm)	Width (mm)
128	178	32	11
160	210	32	11
256	306	32	11
320	370	32	11

● BN

7202



Centre (mm)	Length (mm)	Height (mm)	Width (mm)
96	111	28	12
128	144	28	12
160	176	28	12
256	272	28	12
320	337	28	12

● BN

7298



Centre (mm)	Length (mm)	Height (mm)	Width (mm)
128	144	37	16
160	176	37	16
224	240	37	18
320	340	37	20

● MB ● TG

7092/08



Centre (mm)	Length (mm)	Height (mm)	Width (mm)
96	104	27	8
128	136	27	8
160	168	27	8
256	264	27	8
320	328	27	8

● BN

A



Centre (mm)	Length (mm)	Height (mm)	Width (mm)
128	135	30	12
160	167	30	12
224	231	30	12
320	327	30	12

● BN ● MB ● FS

D*



Centre (mm)	Length (mm)	Height (mm)	Width (mm)
96	106	37	10
128	138	37	10

● BN ● MC

OK90



Centre (mm)	Length (mm)	Height (mm)	Width (mm)
128	149	24	7

● MC

909



Centre (mm)	Length (mm)	Height (mm)	Width (mm)
128	142	40	14
160	174	40	14
224	238	40	14
320	334	40	14
448	480	40	14

● SS

8513



Centre (mm)	Length (mm)	Height (mm)	Width (mm)
128	150	40	13
160	182	40	13
192	214	40	13
224	246	40	13
352	374	40	13
554	576	40	13

● SS

SSD



Centre (mm)	Length (mm)	Height (mm)	Width (mm)
128	138	33	10
160	170	33	10
192	202	33	10
288	298	33	10
352	362	33	10
448	458	33	10

● SS

Knobs

139



Centre (mm)	Height (mm)	Width (mm)
K	27	29

● BN ● CH ● MC

947



Length (mm)	Height (mm)	Width (mm)
30	32	22

● CH ● SC

1172



Centre (mm)	Height (mm)	Width (mm)
K	19	14

● MB

3321



Centre (mm)	Height (mm)	Width (mm)
K	26	27

● BN

3801



Centre (mm)	Length (mm)	Height (mm)	Width (mm)
K	33	25	33

● AB ● BN ● CH ● P ● MB

278



Centre (mm)	Length (mm)	Height (mm)	Width (mm)
32	23	40	49

● BN ● MB ● TG

1112



Centre (mm)	Length (mm)	Height (mm)	Width (mm)
16	25	27	21

● BN ● CH ● MC

1186K



Centre (mm)	Length (mm)	Height (mm)	Width (mm)
K	38	25	19

● BSAT ● BSBN

3440K



Centre (mm)	Length (mm)	Height (mm)	Width (mm)
K	21	33	18

● BN ● AC ● BSBN

8047



Centre (mm)	Length (mm)	Height (mm)	Width (mm)
K	38	31	38

● BN ● MC

699



Centre (mm)	Length (mm)	Height (mm)	Width (mm)
K	43	34	43

● BN ● MB ● TG

1160L



Centre (mm)	Height (mm)	Width (mm)
K	28	25

● BN ● MC

3318



Centre (mm)	Length (mm)	Height (mm)	Width (mm)
16	39	18	21

● CH ● MC ● BN

3515



Height (mm)	Width (mm)
20	12
25	20

● SC

8393



Centre (mm)	Length (mm)	Height (mm)	Width (mm)
K	64	32	22

● P

8741



Centre (mm)	Length (mm)	Height (mm)	Width (mm)
K	33	28	33

● BN ● CH ● AB

9909



Centre (mm)	Length (mm)	Width (mm)
K	45	45

● MB

C10



Centre (mm)	Length (mm)	Height (mm)	Width (mm)
K	30	30	30

● WHC/P

C14



Centre (mm)	Length (mm)	Height (mm)	Width (mm)
K	75	35	23

● WHC/P

GL02



Centre (mm)	Length (mm)	Height (mm)	Width (mm)
K	35	28	35

● CL/CH

GL03



Centre (mm)	Length (mm)	Height (mm)	Width (mm)
K	35	32	35

● CL/CH

MJ002



Centre (mm)	Length (mm)	Height (mm)	Width (mm)
K	52	18	9

● SN

MJ003



Centre (mm)	Length (mm)	Height (mm)	Width (mm)
K	30	25	30

● P

CV30

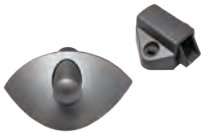


Height (mm)	Width (mm)
30	30

● BN ● CH ● SC ● PG ● BKCH

Push Button

9010



Centre (mm)	Length (mm)	Width (mm)
32	80	16

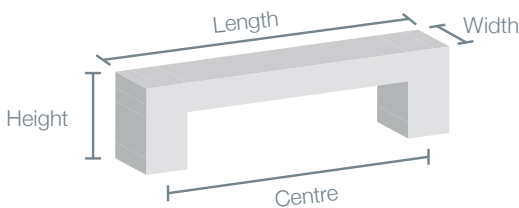
● SC

Order Guide

All handles and knobs are supplied with a set of screws to suit.
When ordering handles or knobs please use the following code string.

	Handle Code	Centre Size	Finish
Example	1037	128mm	BN

Guide To Handle Dimensions



Length: Overall length of the handle (mm)
Centre: Screw hole to screw hole (mm)
Height: Height/projection of handle (mm)
Width: Width of handle face (mm)

For help with codes, speak to your Technical Sales Representative.
Please note, not all handle sizes are available in all finishes.

*Recessed Handle 709 MB and 709 MW available under 7057 handle family

*Bow Handle TSB MB only available in 96mm

*Square Handle 3064 SB and 3064 PB only available in 128mm and 160mm

*Square Handle 3447 MB only available in 160mm

*Square Handle D MC only available in 96mm

Colour Finish Guide

Please note: Colour finish guide is an indicative only - actual finish may vary.

AB		Antique Bronze	MBN		Matt Brushed Nickel
ABS		Aluminium Brushed Satin	MC		Matt Chrome
AC		Antique Copper	MW		Matt White
AI		Antique Iron	P		Pewter
BA		Brushed Anthracite	PA		Pearl Anthracite
BC		Brushed Copper	PB		Polished Brass
BKCH		Black Chrome	PC		Polished Chrome
BLKN		Black Nickel	PG		Pearl Gold
BN		Brushed Nickel	S		Silver
BSAT		Brushed Satin Antique Tin	SB		Satin Brass
BSDN		Brushed Satin Black Nickel	SC		Satin Chrome
CG		Champagne Gold	SN		Satin Nickel
CH		Chrome	SS		Stainless Steel
CL		Clear Glass	T		Tungsten
CMB		Copper Matt Black	TG		Titanium Grey
FS		Foggy Silver	WH		White
G		Gold	WHC		White Crackled Finish
MB		Matt Black			

Victoria

Titus Tekform Pty Ltd
8/59 Jersey Road
Bayswater, VIC, 3153
T: +61 3 9737 5566

Titus Tekform Pty Ltd
2/24 Kane Road
Wodonga, VIC, 3690
T: +61 2 6056 3188

Western Australia

Titus Tekform Pty Ltd
5/2 Wittenberg Drive
Canning Vale, WA, 6155
T: +61 8 9455 2122

South Australia

Titus Tekform Pty Ltd
PO Box 357,
Bayswater, VIC, 3153
T: +61 3 9737 5566

New South Wales

Titus Tekform Pty Ltd
83 Jemma Road
Prestons, NSW, 2170
T: +61 2 9826 0007

Titus Tekform Pty Ltd
Unit 3, 100 Munibung Road
Cardiff, NSW, 2285
T: +61 2 4954 4011

Canberra

Titus Tekform Pty Ltd
Shop 6, 55 Heffernan Street
Mitchell, ACT, 2911
T: +61 2 9826 0007

Tasmania

Titus Tekform Pty Ltd
88 Hopkins Street
Moonah, TAS, 7009
T: +61 3 6273 1199

Queensland

Titus Tekform Pty Ltd
76 Northlink Place
Virginia, QLD, 4014
T: +61 7 3266 3999

Titus Tekform Pty Ltd
20 Civil Road
Garbutt, QLD, 4814
T: +61 7 4779 1366

Find a Customer Service Nearby

Titus Tekform Australia

www.titustekform.com.au

info@titustekform.com.au

1300-0-TITUS

Stefano Orlati New Zealand

www.stefano-orlati.com

stefano-orlati@titusplus.com

Connect with us

[LinkedIn.com/company/titustekform](https://www.linkedin.com/company/titustekform)

[Instagram.com/titustekform](https://www.instagram.com/titustekform)

[Pinterest.com/titustekform](https://www.pinterest.com/titustekform)

"Titus Tekform"