

polytec

STECCAWOOD prefinished decorative battens

polytec

[www.polytec.com.au](http://www.polytec.com.au)

p 1300 300 547

ISSUE: 03i



polytec offer an express sample service.

Visit [www.polytec.com.au](http://www.polytec.com.au) to order your free sample.

Create your look

PROUDLY  
SUPPORTING



Find your local supporting cabinet maker  
[www.polytec.com.au/mcgrath-foundation](http://www.polytec.com.au/mcgrath-foundation)

Decorative battens in **STECCAWOOD R** 31mm 31x62mm Half Round profile Natural Oak Ravine, Prime Oak Woodmatt, Notoio Walnut Woodmatt and Black Woodmatt.



## STECCAWOOD

Steccawood battens impart the realistic warmth of timber, ideal for wall and ceiling applications in either a vertical or horizontal configuration. Steccawood prefinished decorative battens create strong directional lines that will add a striking feature to any internal space.

**polytec** has introduced a new profile into the Steccawood range, made for design flexibility and added luxury. The Half Round Steccawood profile is available in three sizes, 17x34mm, 24x48mm and 31x62mm, finished in a range of Woodmatt and Ravine colours. This rounded batten option stands as an amazing feature piece to be used in commercial or residential projects. Steccawood Half Round Battens are now available in a raw MR MDF substrate in three sizes, suitable for professional painted applications.

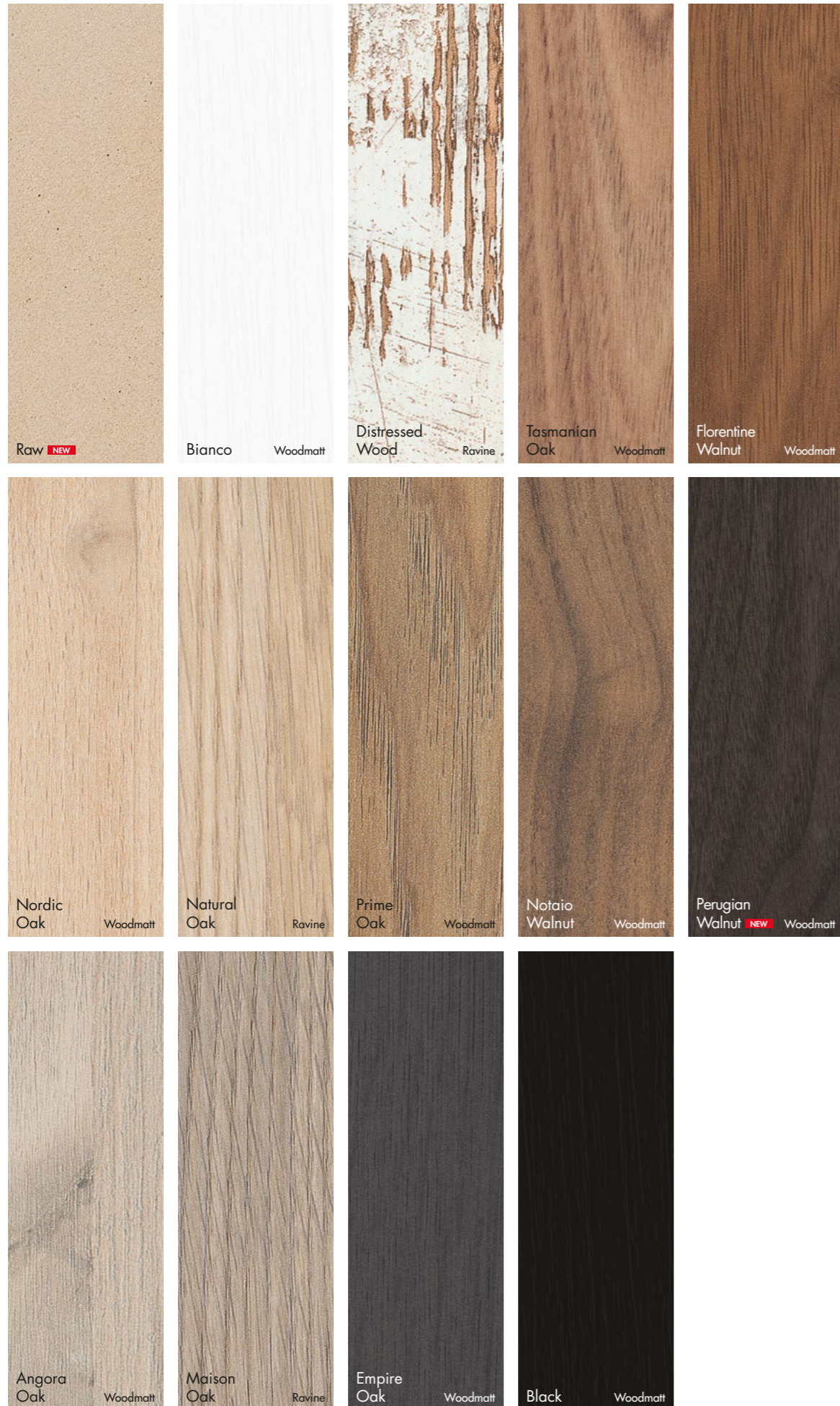
Made from E-Zero MDF or LDF, and wrapped in decorative overlay, Steccawood prefinished battens provide a cost effective solution, now available in a beautifully contemporary, designer solution. Steccawood decorative battens have the versatility to be used in applications such as walls, ceilings and screening.

Reception counter in **STECCAWOOD** 31x31mm Standard profile Prime Oak Woodmatt and **XENOLITH** Calacutta Grey Smooth.  
Wall screening in **STECCAWOOD** 31x31mm Standard profile Natural Oak Ravine.  
Curved screening in **STECCAWOOD** 50x100mm Standard profile Natural Oak Ravine.  
Kickboards in **LAMINATE** Brushed Aluminium.



**STECCAWOOD range**

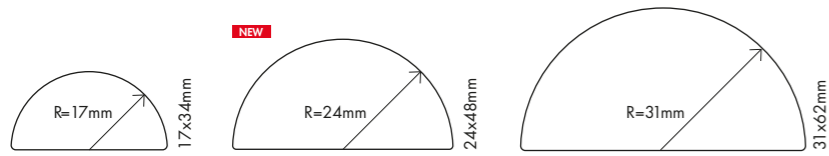
polytec swatches and samples represent a small area of the overall colour structure.  
To view the large colour sample, visit [www.polytec.com.au](http://www.polytec.com.au).



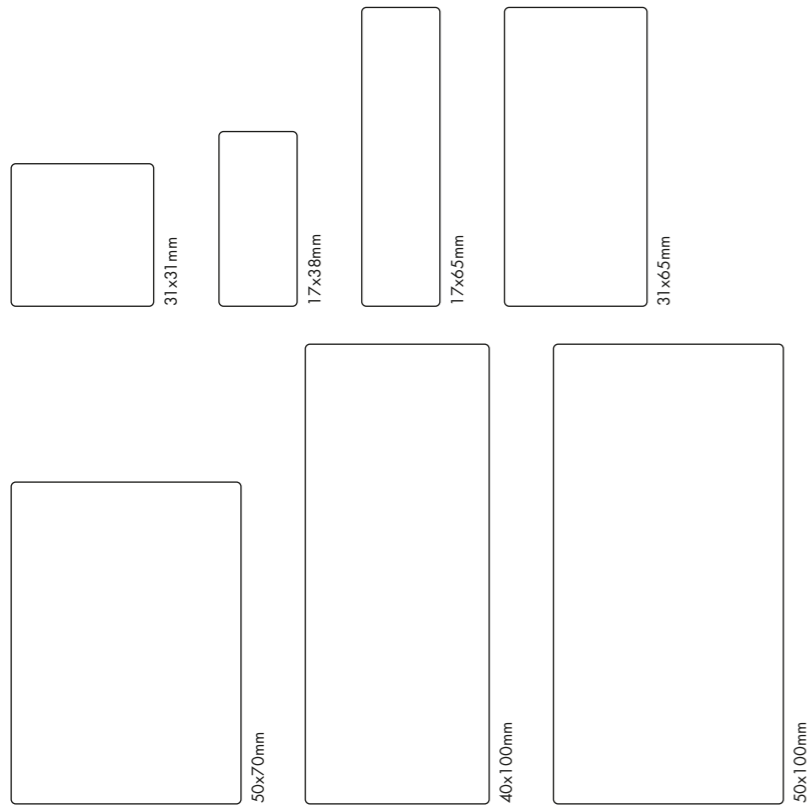
Dark coloured surfaces will show fingerprints and require more care and maintenance than lighter coloured surfaces.  
It is recommended to test a product sample prior to colour selection.



## Half Round profile



## Standard profile



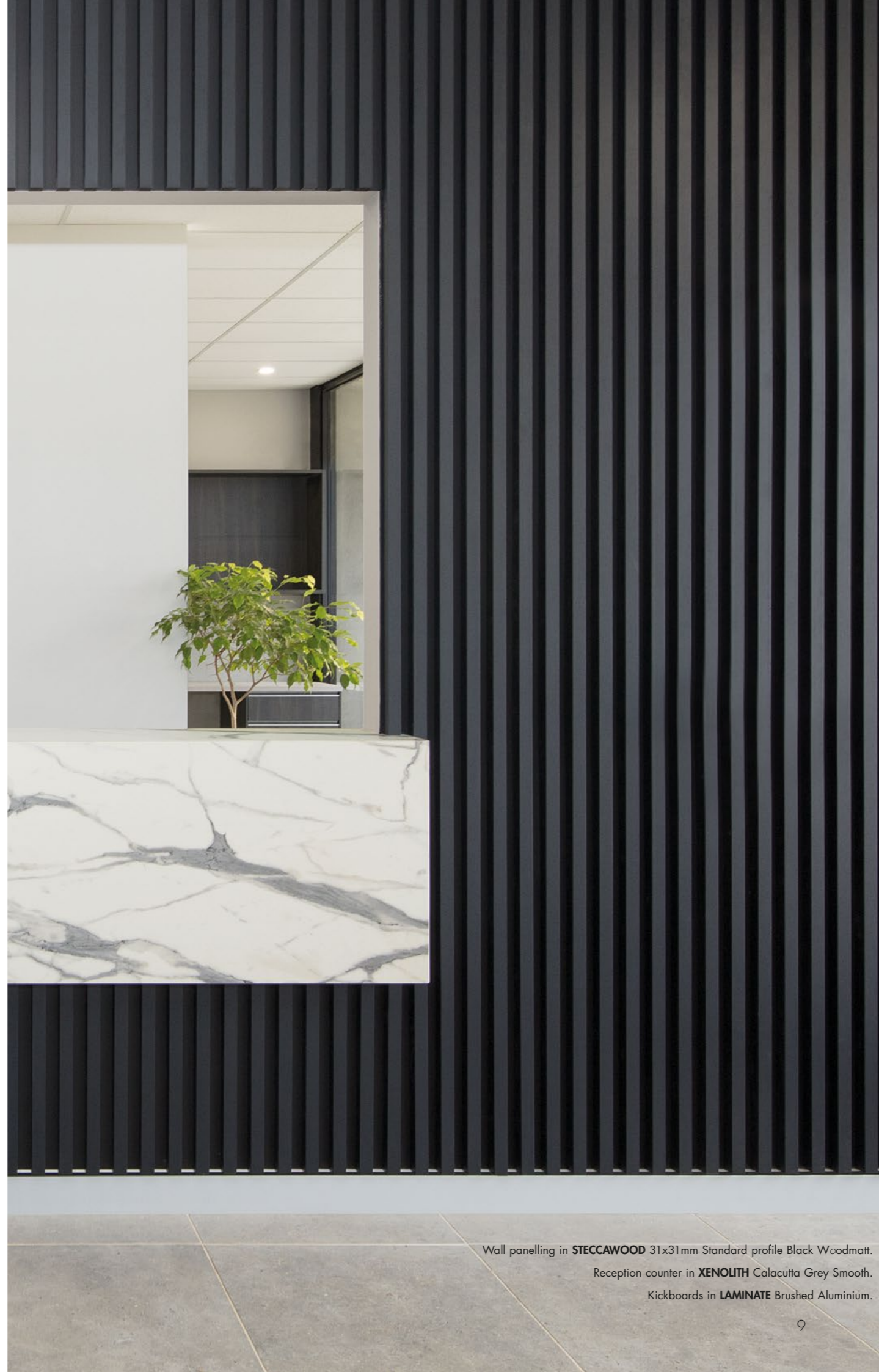
## Profile availability

Supplied in lengths of 3600mm.

Minimum order quantities of **15 battens** per colour apply, with the exception of products marked **No Min.**

Other custom sizes also available as Made-to-Order.

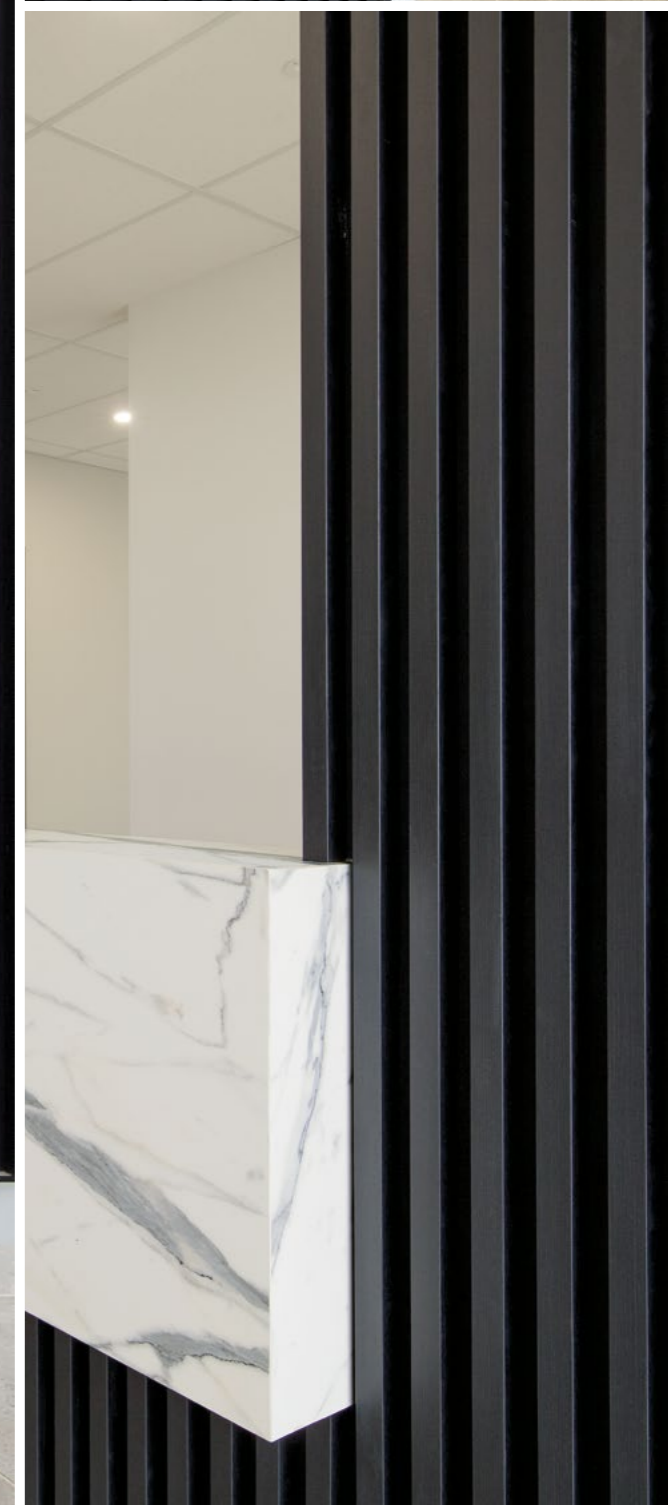
	Standard							Half Round		
	17x38mm	17x65mm	31x31mm	31x65mm	40x100mm	50x70mm	50x100mm	R 17 mm 17x34mm	R 24 mm 24x48mm	R 31mm 31x62mm
<b>NEW</b> Raw	no	no	no	no	no	no	no	No Min	No Min	No Min
Angora Oak Woodmatt	15	15	15	15	15	15	15	15	15	15
Bianco Woodmatt	15	15	15	15	15	15	15	15	15	15
Black Woodmatt	No Min	15	No Min	No Min	15	15	No Min	No Min	No Min	15
Distressed Wood Ravine	15	15	15	15	15	15	15	15	15	15
Empire Oak Woodmatt	15	15	15	15	15	15	15	15	15	15
Florentine Walnut Woodmatt	15	15	15	15	15	15	15	No Min	No Min	15
Maison Oak Ravine	15	15	15	No Min	15	15	15	15	15	15
Natural Oak Ravine	No Min	No Min	No Min	No Min	No Min	No Min	No Min	No Min	No Min	15
Nordic Oak Woodmatt	15	15	15	15	15	15	15	15	15	15
Notaio Walnut Woodmatt	15	15	No Min	15	15	15	15	No Min	No Min	15
<b>NEW</b> Perugian Walnut Woodmatt	15	15	15	15	15	15	15	15	15	15
Prime Oak Woodmatt	No Min	15	No Min	No Min	No Min	No Min	No Min	No Min	No Min	15
Tasmanian Oak Woodmatt	No Min	15	No Min	15	15	15	No Min	No Min	No Min	15



Wall panelling in **STECAWOOD** 31x31mm Standard profile Black Woodmatt.

Reception counter in **XENOLITH** Calacutta Grey Smooth.

Kickboards in **LAMINATE** Brushed Aluminium.





Panelling in **STECCAWOOD** 31x31mm Standard profile Black Woodmatt.

Reception counter in **XENOLITH** Calacutta Grey Smooth.

Kickboards in **LAMINATE** Brushed Aluminium.



## ENVIRONMENT & SUSTAINABILITY

**polytec** is committed to an eco-friendly and sustainable environment. It is an intrinsic part of the way we do business daily. Our decisions are made so that they have minimum negative impact on the environment.

We manage waste responsibly through numerous recycling programs including aluminium and metals, used oils and timber waste is recycled back into energy. We subscribe to local government environmental initiatives and voluntary audits as well as our own internal Energy and Carbon Management Policy (ECM), which aligns with the Australian Government's Energy Efficiency Opportunities (EEO) program.

**polytec** doors, benchtops, and Steccawood are Australian Made & Owned.

## CARE & MAINTENANCE

Steccawood products are manufactured in Australia using the highest quality materials and designed to provide years of trouble free service. Care should be taken to wipe up spills immediately, ensuring the products are not exposed to high or continuous levels of moisture, steam and humidity. Steccawood is for internal use only and it is recommended not to be installed in direct sunlight.

Steccawood is manufactured using decorative paper overlays and is designed to be used in low traffic applications. Steccawood should not sit on the floor as wet mopping and vacuum cleaners are likely to cause damage. Strictly for internal use, not to be used in wet areas such as bathrooms or environments of high humidity, or where steam and heat are present.

Steccawood prefinished decorative battens should be cleaned by wiping down using a damp soft cloth containing warm, soapy water. For more stubborn stains, use a mild household spray to wipe down the door or panel with a soft cloth taking care not to rub too hard. Dry using a soft cloth so as not to leave any residue on the product. Always ensure that you refer to the recommendations provided by the cleaning product manufacturer before use.

Where products are installed in a kitchen environment use range hoods whenever cooking, to avoid steam and cooking oil vapours from adversely effecting surfaces. Failure to follow the above care instructions may result in damage to your Steccawood product and void your entitlement to any warranty. **polytec's** warranty does not cover wear and tear.

By following these simple steps you should retain beautiful surfaces for many years to come.

Visit [www.polytec.com.au](http://www.polytec.com.au) for specific care and cleaning information. Dark coloured surfaces will show fingerprints and require more care and maintenance than lighter coloured surfaces. It is recommended to test a product sample prior to colour selection.

The colours and details shown in this brochure are to the highest standards in printing. However, they should only be used as an indication of actual product colour. To order your free colour sample visit [www.polytec.com.au](http://www.polytec.com.au).

**polytec** swatches and samples represent a small area of the overall colour structure, to view the large colour sample, visit [www.polytec.com.au](http://www.polytec.com.au).

The use of our current samples gives the colour and finish that a customer would expect to receive. Samples are provided for colour and finish selection and **polytec** recommend testing a sample for fingerprint resistance and ease of cleaning. **polytec** does not guarantee exact colour matches across product ranges due to colour variation in each product group.

## COMPLEMENTARY RANGES

**BENCHTOPS** range

**ULTRAGLAZE** range

**MELAMINE** doors & panels

**THERMOLAMINATED** doors & panels

**EVOLUTION** range

**ALUMINIUM** framed doors

**XENOLITH** premium coloured core

**ALFRESCO** range

**35mm ARCHITECTURAL** doors

**WARDROBE** range

COVER IMAGE: Ceiling battens in **STECCAWOOD** 50x100mm Standard profile Natural Oak Ravine.

Wall panelling in **RAVINE** Soft Walnut.