



 **LINCOLN**
S E N T R Y

 **DECO**[®]
SPLASH
Aluminium Splashbacks

INTRODUCING DECOSPLASH!

DecoSplash® is a unique new kitchen splashback product that is made from aluminium! DecoSplash® is made with a durable polyurethane powder coating, into which any photographic image can be transferred to create your beautiful splashback.



Catalogue Range	3
Choose from a variety of images of natural materials and patterns in standard sizes	
Essentials Collection	4
Mereton Collection	6
Roccia Collection	8
Mosaics Collection	9
Elements Collection	10
Metallic Collection	11
Timber Collection	12
Culture Collection	13
Signature Range	15
A collection of images available to choose from that are custom made to your space	
Metro Collection	16
Fresh Collection	17
Nature Collection	18
H ² O Collection	19
Bathroom Collection	20
Inspirations	23
Make your own splashback. Choose your own image or photo to have on your splashback!	
Do It Your Way	24
Tips & Tricks	25
Island Back Ideas	26
Laundry Ideas	27
BBQ Kitchen Ideas	27
Same Image – Four Applications	28
Fundamentals	31
The ‘how-to’ of DecoSplash including installation guides, FAQ’s, Compliance information and more	
Kitchen Installation Guide	32
Bathroom Installation Guide	32
DecoSplash FAQs	33
Compliance	34

CATALOGUE RANGE

Sophisticated and versatile, the Catalogue Range of DecoSplash® Aluminium splashbacks create the perfect feature for your home. Choose from a variety of designs and images.

DecoSplash® Catalogue Range is available in the following splashback sizes:

600 series

600mm high x 1800mm wide

600mm high x 2400mm wide

600mm high x 3000mm wide

600mm high x 3600mm wide

750 series

750mm high x 1800mm wide

750mm high x 2400mm wide

750mm high x 3000mm wide

750mm high x 3600mm wide

1200 series - Full sheet

1200mm high x 2400mm wide

1200mm high x 3000mm wide

1200mm high x 3600mm wide

1500 series - Full sheet

1500mm high x 3000mm wide

1500mm high x 3600mm wide

In this range, there are 8 collections to choose from:

Essentials Collection

Mereton Collection

Roccia Collection

Mosaics Collection

Elements Collection

Metallic Collection

Timber Collection

Culture Collection

Most images featured in the Catalogue Range are representative of the 750mm high x 3,600mm wide scale.



DecoSplash® process patent pending

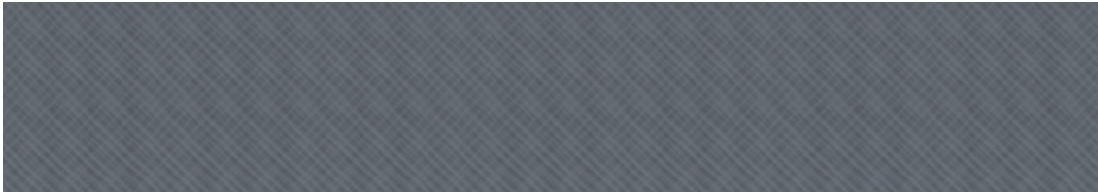
FAYE DOMINOS



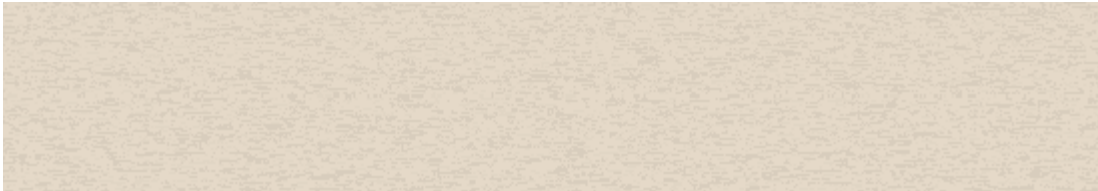
CATALOGUE RANGE



SPECKLED DSP-ES01-06



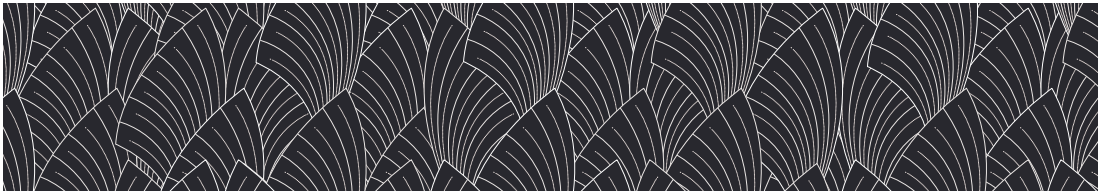
CROSS HATCH DSP-ES02-07



LACQUER DSP-ES03-03



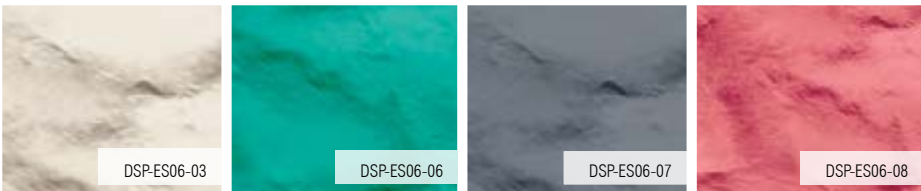
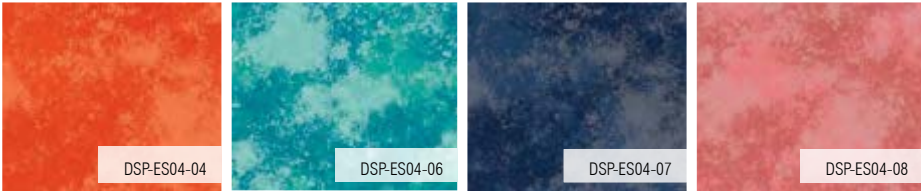
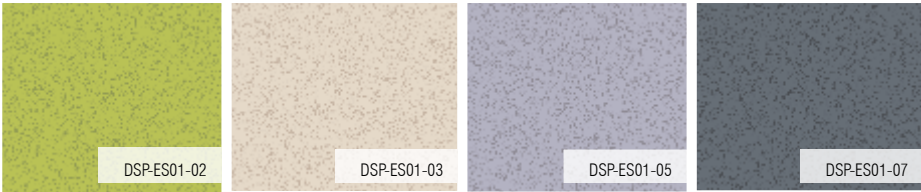
ORVILLE DSP-ES04-05



FAYE DSP-ES05-01



CRINKLED PAPER DSP-ES06-05



WE CAN SUPPLY ANY OF THESE PATTERNS IN ALMOST ANY COLOUR.

MERETON COLLECTION

CATALOGUE RANGE

HONEYCOMB

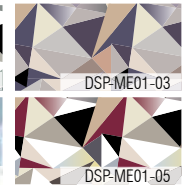


SHATTER

DSP-ME01-04



DSP-ME01-02



DSP-ME01-03



DSP-ME01-01

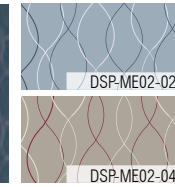


DSP-ME01-05

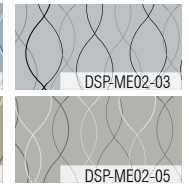


SAVINE

DSP-ME02-01



DSP-ME02-02



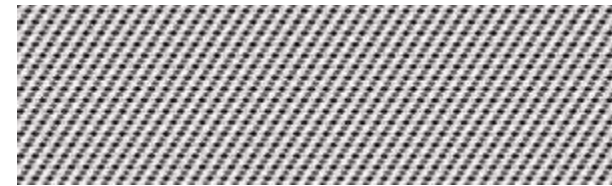
DSP-ME02-03



DSP-ME02-04



DSP-ME02-05

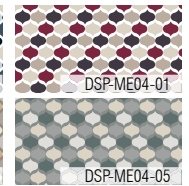


EPONA

DSP-ME04-01



DSP-ME04-02



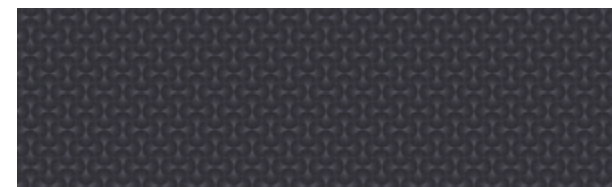
DSP-ME04-01



DSP-ME04-04

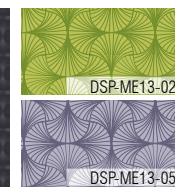


DSP-ME04-05

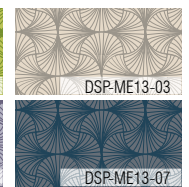


CECILIA

DSP-ME13-01



DSP-ME13-02



DSP-ME13-03



DSP-ME13-05

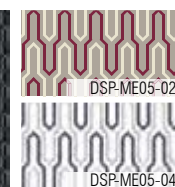


DSP-ME13-07

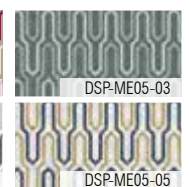


RIALTO

DSP-ME05-01



DSP-ME05-02



DSP-ME05-03



DSP-ME05-04

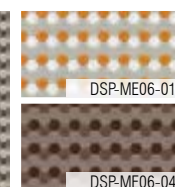


DSP-ME05-05

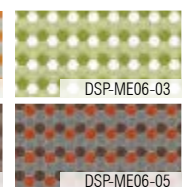


HONEYCOMB

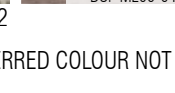
DSP-ME06-02



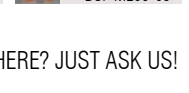
DSP-ME06-01



DSP-ME06-03



DSP-ME06-04

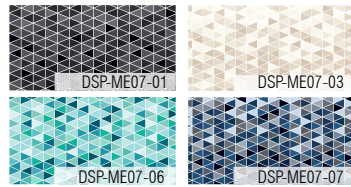


DSP-ME06-05

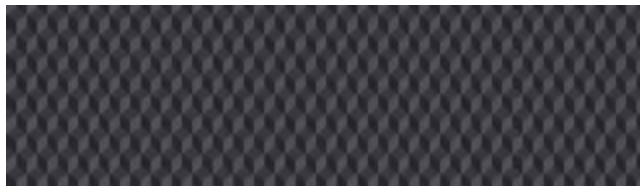
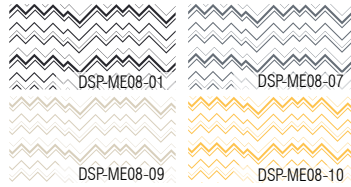
YOUR PREFERRED COLOUR NOT HERE? JUST ASK US!



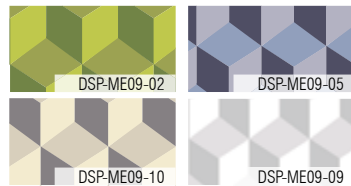
RHOMBUS DSP-ME07-04



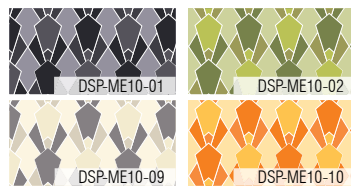
LAMONT DSP-ME08-02



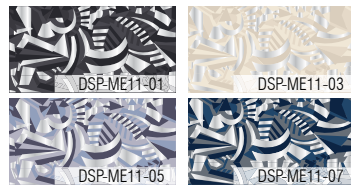
CUBED DSP-ME09-01



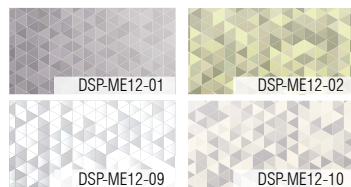
SYLVIA DSP-ME10-06



OTIS DSP-ME11-09



LIGHT PRISMS DSP-ME12-11



WE CAN SUPPLY ANY OF THESE PATTERNS IN ALMOST ANY COLOUR.

RHOMBUS HOT EMBER



ROCCIA COLLECTION

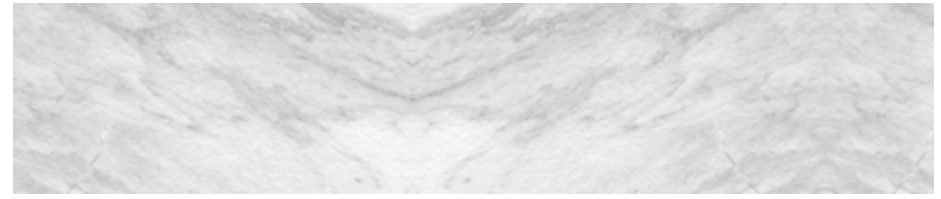
CATALOGUE RANGE

LIGHT MARBLE



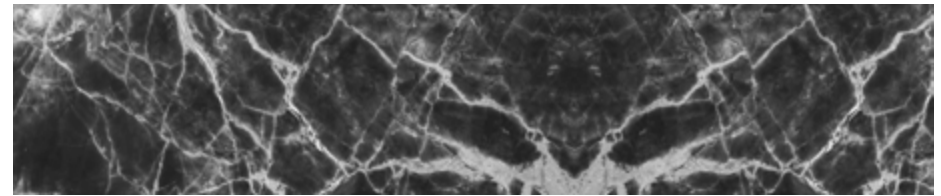
TRAVERTINE

DSP-RC01-01



WHITE CARRERA

DSP-RC02-01



DARK MARBLE

DSP-RC03-01



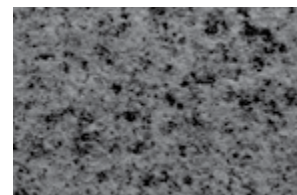
LIGHT MARBLE

DSP-RC04-01



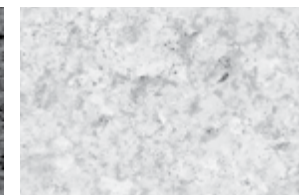
GOLD MARBLE

DSP-RC05-01



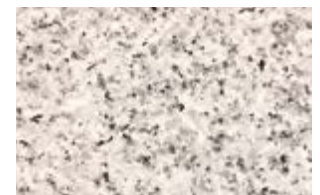
GRANITE NERO

DSP-RC06-01



GRANITE BIANCO

DSP-RC06-02



GRANITE IVORY

DSP-RC06-03

MOSAICS COLLECTION

CATALOGUE RANGE

AGATE



ESPANA

DSP-MS01-01



AGATE

DSP-MS02-01



LISBON

DSP-MS05-01



SUBWAY NERO

DSP-MS07-01



DSP-MS07-02

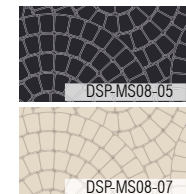


DSP-MS07-03

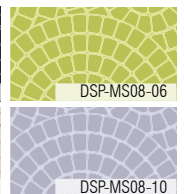


ROUND MOSAICS

DSP-MS08-04



DSP-MS08-05



DSP-MS08-06



DSP-MS08-07



DSP-MS08-10



HEXAGON

DSP-MS09-04



DSP-MS09-01



DSP-MS09-02



DSP-MS09-03



DSP-MS09-05

ASH GREY BRICK



DRYSTONE BLOCK

DSP-EL01-01



MOTTLED BRICK

DSP-EL04-01



TILED SANDSTONE

DSP-EL07-01



ASH GREY BRICK

DSP-EL03-01



BRICK BIANCO

DSP-EL08-01



AUSTRALIAN SANDSTONE

DSP-EL09-01

GRUNGE STONE



RED EARTH

DSP-MT03-01



CINNABAR

DSP-MT05-01



GRUNGE STONE

DSP-MT06-01



IMPASTO

DSP-MT04-01



GOLD FOIL/LEAF

DSP-MT09-01



METAL MESH

DSP-MT10-01

BLUE PARQUETRY



BLUE PARQUETRY

DSP-TM01-01



WEATHERED TIMBER

DSP-TM02-01



WEATHERED PARQUETRY

DSP-TM03-01



BAMBOO WALL

DSP-TM04-01



BLONDE FLOORBOARDS

DSP-TM05-01



MAPLE

DSP-TM06-01

CULTURE COLLECTION

CATALOGUE RANGE

PAINTING



JAPANESE WALL PAPER

DSP-CL01-01



AZTEC

DSP-CL02-01



PAINTING

DSP-CL03-01



LUXOR

DSP-CL04-01



KANGAROOS

DSP-CL05-01



SHAQRA

DSP-CL06-01

Catalogue Range	3
Choose from a variety of images of natural materials and patterns in standard sizes	
Essentials Collection.....	4
Mereton Collection.....	6
Roccia Collection.....	8
Mosaics Collection	9
Elements Collection	10
Metallic Collection	11
Timber Collection.....	12
Culture Collection	13
Signature Range	15
A collection of images available to choose from that are custom made to your space	
Metro Collection	16
Fresh Collection	17
Nature Collection	18
H ² O Collection	19
Bathroom Ideas	20
Inspirations	23
Make your own splashback. Choose your own image or photo to have on your splashback!	
Do It Your Way	24
Tips & Tricks.....	25
Island Back Ideas	26
Laundry Ideas	27
BBQ Kitchen Ideas	27
Same Image – Four Applications.....	28
Fundamentals	31
The ‘how-to’ of DecoSplash including installation guides, FAQ’s, Compliance information and more	
Kitchen Installation Guide.....	32
Bathroom Installation Guide	32
DecoSplash FAQs	33
Compliance	34

SIGNATURE RANGE

Attract attention with DecoSplash®. A collection of inspiring images are available to choose from, and will be custom-formatted to your space.

In this section, you will find a range of images that can be made to order to suit your kitchen or bathroom space. Each image will be scaled to size to your measurements.

There are 5 Collections featured as part of the Signature Range:

Metro Collection

Fresh Collection

Nature Collection

H²O Collection

Bathroom Collection

For Signature range orders, your selected image will be made to suit dimensions you provide and you will receive an image proof for your approval prior to production of your DecoSplash splashback.



DecoSplash® process patent pending

METRO COLLECTION

NEW YORK



SIGNATURE RANGE



VENEZIA

DSP-MR01-01



NEW YORK

DSP-MR04-01



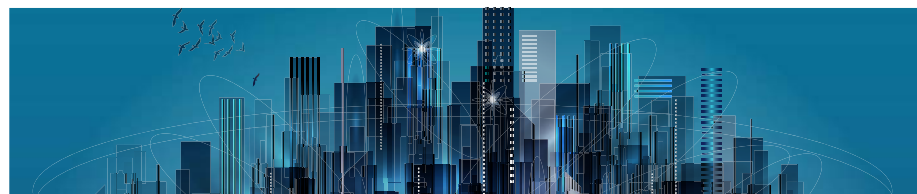
HARBOUR SUNSET

DSP-MR07-01



CITY RUSH

DSP-MR08-01



ARTISTS CITY BLUE

DSP-MR09-01



CITY REFLECTIONS

DSP-MR10-01

FRESH COLLECTION

SIGNATURE RANGE

LEMON LIME



ORANGE

DSP-FR02-01



WINE

DSP-FR03-01



PLUNGE

DSP-FR04-01



LEMON LIME

DSP-FR07-01



GREEN LEAVES

DSP-FR08-01



FRUIT SALAD

DSP-FR09-01

AUTUMN FOREST



AUTUMN FOREST

DSP-NA01-01



BAMBOO FOREST

DSP-NA02-01



GREY FOREST

DSP-NA04-01



AUSTRALIAN BUSH

DSP-NA07-01



VINEYARD

DSP-NA08-01



GLACIER

DSP-NA09-01

H²O COLLECTION

SIGNATURE RANGE

BEACH STONES



REEF

DSP-H201-01



BEACH STONES

DSP-H203-01



REFLECTIONS

DSP-H204-01



AT ANCHOR

DSP-H208-01



OCEAN BLUE

DSP-H209-01



RIVER SONG

DSP-H210-01

BATHROOM COLLECTION

SIGNATURE RANGE

WIPEOUT



TWO PALMS

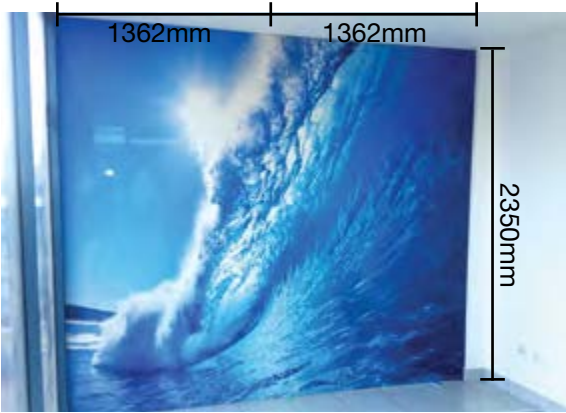
DSP-BA04-01

DecoSplash® BATHROOMS

DecoSplash® is ideal for bathrooms and wet area linings because it is an impermeable membrane, and is a non-porous surface. It is easy to clean and is unaffected by soap residue. As with DecoSplash® for a kitchen, you can have almost any image you like for your bathroom. Be creative.

- ✓ Bathroom splashbacks can be made over multiple panels, you are not limited to just one sheet with the image, we can enlarge the image to suit.
- ✓ The vertical orientation of the Bathroom Collection images can be formatted to horizontal orientation for applications such as a matching vanity splashback.
- ✓ If you like the look of tiles for your bathroom, you can select an image from the mosaics range and we will format it to your bathroom size.

- ✓ Smooth Polyurethane Surface.
- ✓ Easy to Clean.
- ✓ No need for a waterproof membrane behind DecoSplash®. DecoSplash® splashback IS the waterproof membrane.



DecoSplash® Wipeout image across 2 panels as a bathroom feature wall at Easy Glass Showroom in Darwin



SHARKS DSP-BA05-01



WATER FALLS DSP-BA06-01



RAIN FOREST DSP-BA01-01



TROPICAL FISH DSP-BA02-01



WIPEOUT DSP-BA03-01

Catalogue Range	3
Choose from a variety of images of natural materials and patterns in standard sizes	
Essentials Collection.....	4
Mereton Collection.....	6
Roccia Collection.....	8
Mosaics Collection	9
Elements Collection	10
Metallic Collection	11
Timber Collection.....	12
Culture Collection	13
 Signature Range	 15
A collection of images available to choose from that are custom made to your space	
Metro Collection	16
Fresh Collection	17
Nature Collection	18
H ² O Collection	19
Bathroom Ideas	20
 Inspirations	 23
Make your own splashback. Choose your own image or photo to have on your splashback!	
Do It Your Way	24
Tips & Tricks.....	25
Island Back Ideas	26
Laundry Ideas	27
BBQ Kitchen Ideas	27
Same Image – Four Applications.....	28
 Fundamentals	 31
The ‘how-to’ of DecoSplash including installation guides, FAQ’s, Compliance information and more	
Kitchen Installation Guide.....	32
Bathroom Installation Guide	32
DecoSplash FAQs	33
Compliance	34

INSPIRATIONS

Make your splashback truly unique with your inspirations.
Choose your own images that reflect your personal style and interests, from travel snaps to your personal passion.



DecoSplash® process patent pending



SUPPLYING YOUR OWN IMAGES

To produce your DecoSplash®, it is ideal to supply images that are in the highest resolution (i.e. 10MB or more) and 300dpi (pixels). Call us to discuss whether the image you have selected fits the criteria. The DecoSplash® process can use images supplied in a range of formats such as Jpeg, Tiff, and Vector files.

FINDING YOUR OWN IMAGES

Instead of supplying your own personal photo you can find images on the internet, using image libraries such as Shutterstock, iStockphoto and CanStock Photo.

Use your search engine to access these photographic websites.

Once in a website type your key word, for example “cityscape” into the search bar and press search. Many images will appear.

For Shutterstock and iStockphoto, you can save images that you like to a “lightbox” for future reference or to review the shortlist of images you like.

In Canstock, you can save images to “favourites” for future reference or to review the shortlist of images you like.

Alternatively, note down the image number.

To open a “lightbox” or “favourites” for your selection of images, you may have to sign in by providing your email address.

ORIENTATION OF IMAGE

Some websites will allow you to refine your search so that the only images that appear are either horizontal, vertical or square. The best orientation for your splashback is horizontal, however in some instances other formats will work. For example in a bathroom a vertical image may be more suitable.

Alternatively, type in “panorama” along with your key word into the search bar, to bring up images in the most suitable format for splashback dimensions (horizontal or landscape orientation). For example, “panorama cityscape”

STYLE OF IMAGE

If you prefer images in a certain style, for example Black and White, Sepia, Vintage, Retro or Grunge, type that in to the search engine along with your keyword. For example “grunge cityscape”.

CLARITY OF IMAGE

Some websites allow you to view the image in a range of resolutions to determine whether clarity may be affected when the image is enlarged for your splashback. To produce your DecoSplash®, it is ideal to select images that are in the highest resolution (i.e. 10MB or more) and 300dpi (pixels). Call us to discuss whether the image you have selected fits the criteria.

The DecoSplash® process can use images supplied in a range of formats such as Jpeg, Tiff, and Vector files.

During the process of creating your splashback, we will take the image you have supplied and the dimensions of your splashback and communicate with you to ensure that you are happy with the look of your image in the scale and dimensions required.

PURCHASING YOUR IMAGE

Follow the prompts on the website for purchasing the image. Once you have purchased your image, place your order with your kitchen manufacturer and supply your image to them. They will order your splashback, and send through to the DecoSplash® team the image you have supplied. The DecoSplash® team will check your image and format it to your splashback dimensions.

Once completed your kitchen manufacturer will contact you to show you the proof of your custom image for you to approve prior to commencing production of your DecoSplash® splashback.

TERMINOLOGY

A Vector file is one that can be scaled to any size without loss of clarity. They are computer generated images that are suitable for DecoSplash® custom images.

A Jpeg file is the most common image format and is suitable for DecoSplash® custom images.

A Tiff file is a common image format used by graphic artists and photographers. This format is suitable for DecoSplash® custom images.

PAUL ARNOLD PHOTOGRAPHY

Think outside the square and even try a local photographer for your perfect custom splashback! For Example, in Darwin a popular local photographer Paul Arnold has sold a few of his beautiful local landscape photos to DecoSplash customers for use on their splashback. www.paularnold.com.au



Picture courtesy of Custom Cabinets Design featuring Paul Arnold Photography in Darwin – Showroom



1



3



2



4

1
Showcases the use of DecoSplash® Weathered Timber on both the splashback and the island back to compliment the earthy tones of this kitchen.

2
Shows just how creative you can be with DecoSplash®. Mix and match your kitchen splashback with your island back and even continue the image on to create a fantastic feature wall. Grey Forest and Bianco Brick from the Catalogue Range are featured in this kitchen.

3
Add a touch of class to your kitchen with matching splashback and island back. Cubed Greyscale featured in this kitchen.

4
Uses different DecoSplash® marble images to create an elegant kitchen. Don't be shy, try using different marbles that compliment each other. This kitchen features DecoSplash® Light Marble, and Dark Marble.

DecoSplash is not just limited to kitchen splashbacks, bathroom wet area linings and island backs. Think about your laundry, or your outdoor BBQ. DecoSplash® is an ideal product to liven up these spaces also.

1

This black and white themed laundry features DecoSplash® Beachstones from the H²O Collection.



2

Adding a quirky flair, this laundry features a custom image splashback of... laundry!



3

This outdoor BBQ area features DecoSplash® Grunge Stone by Complete Kitchens in Victoria



4

Try something new. DecoSplash® Metal Mesh compliments this stainless steel outdoor barbeque.



SAME IMAGE - FOUR APPLICATIONS



DecoSplash® can be used in a variety of applications. Same image, different space.

Featured here is Weathered Parquetry from the NEW Timber Collection



Run with a theme using the same image throughout the different rooms in your home.

Showcasing DecoSplash® Ocean Blue from the H²O Collection



Catalogue Range	3
Choose from a variety of images of natural materials and patterns in standard sizes	
Essentials Collection.....	4
Mereton Collection.....	6
Roccia Collection.....	8
Mosaics Collection	9
Elements Collection	10
Metallic Collection	11
Timber Collection.....	12
Culture Collection	13
 Signature Range	 15
A collection of images available to choose from that are custom made to your space	
Metro Collection	16
Fresh Collection	17
Nature Collection	18
H ² O Collection	19
Bathroom Ideas	20
 Inspirations	 23
Make your own splashback. Choose your own image or photo to have on your splashback!	
Do It Your Way	24
Tips & Tricks.....	25
Island Back Ideas	26
Laundry Ideas	27
BBQ Kitchen Ideas	27
Same Image – Four Applications.....	28
 Fundamentals	 31
The ‘how-to’ of DecoSplash including installation guides, FAQ’s, Compliance information and more	
Kitchen Installation Guide.....	32
Bathroom Installation Guide	32
DecoSplash FAQs	33
Compliance	34

FUNDAMENTALS

Here's all you need to know about the technical information for DecoSplash® aluminium splashbacks, including how to install, FAQ's and other important information.

This section includes information such as:

DecoSplash® Kitchen Installation Guide

DecoSplash® Bathroom Installation Guide

DecoSplash® FAQ's

DecoSplash® Compliance

Don't be afraid to try something new. DecoSplash® aluminium splashbacks are not limited to just kitchen and bathroom applications. DecoSplash® aluminium splashbacks can also be used as a feature wall, for wardrobe doors, inserts and more.



DecoSplash® process patent pending

DECOSPLASH® INSTALLATION GUIDE

KITCHEN

DecoSplash® is supplied with a protective plastic sheet. It is recommended to leave the protective sheet on while the splashback is being installed.

STEP 1: WALL PREPARATION

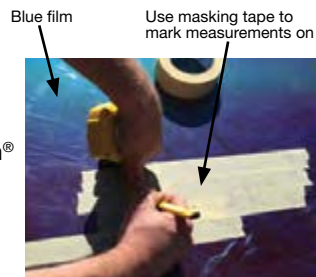
Ensure that the surface of the wall is sound, properly sealed and free of dust and dirt, flat and suitable for fixing DecoSplash® splashback.

STEP 2: MEASURING

Sizes must be measured to the nearest millimetre.

STEP 3: MARKING OUT

After measuring your wall for installation, your DecoSplash® panel should be placed on a flat, clean and level surface. Use a tape measure and pencil to mark and measure the splashback panel to match the wall dimensions.



STEP 4: CUTTING

Use a circular saw with an aluminium blade for long cuts, and cut with the circular saw on the back of the splashback. Use a jig saw with a metal cutting blade for detailed cut outs such as power points and taps.

STEP 5: TEST FIT

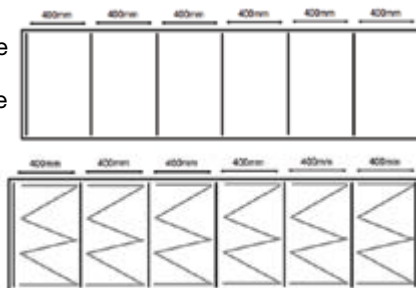
Before applying any adhesives, complete a test fit of the splashback to ensure that it fits correctly. Trim the protective film edges so that the film is only attached to the face of the splashback.

STEP 6: EDGE FINISHING

All cut edges can be filed by gently using a fine, single cut file.

STEP 7: APPLYING TAPE

3M urethane coated double sided tape is available for purchase with DecoSplash®. The double sided tape is used for adhesion while the liquid adhesive cures. The tape supplied is 3.2mm thick to assist with benchtop tolerances. Apply the tape vertically along the cut panel approximately every 400mm.



STEP 8: APPLYING ADHESIVE

Apply a 6mm bead of high strength, water resistant construction adhesive or silicone in a wavy pattern or in circles, between each tape strip.

STEP 9: PANEL SEALANT

Seal where the splashback meets other surfaces eg. benchtops or internal corners, with translucent wet area silicone.

STEP 10: PANEL CLEAN UP

After the splashback is fitted and the adhesive is cured, remove the outer protective film or masking tape in one continuous movement to achieve the best finish. A warm water detergent can be used to wipe down finished panels to remove excess silicone before it dries.

DECOSPLASH® INSTALLATION GUIDE

BATHROOM

STEP 1: WALL PREPARATION

Ensure that the surface of the wall is sound, water proofing has been completed to seal shower hob and the wall is free of dust and dirt, flat and suitable for fixing DecoSplash® as a Bathroom Wall lining.

STEP 2: MEASURING

Ensure that you take accurate measurements of the walls you will be installing DecoSplash® onto.

STEP 3: MARKING OUT

After measuring your wall for installation, your DecoSplash® panel should be placed on a flat, clean and level surface. Use a tape measure and pencil to mark and measure the wall for your bathroom wall lining.

STEP 4: CUTTING

Double check all measurements before starting to cut the panel. If cutting for your project is required, for long cuts use a panel saw and for more detailed cut-outs (eg. for tapware, showerheads etc) use a jigsaw. Otherwise we can supply your panels cut to size.

STEP 5: TEST FIT

Before applying any adhesives, complete a test fit of the wall lining to ensure that it fits correctly. Trim the protective film edges so that the film is only attached to the face of the splashback.

STEP 6: EDGE FINISHING

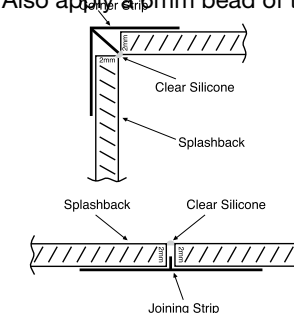
All cut edges can be filed using a fine, single-cut file.

STEP 7: APPLYING ADHESIVE

Apply a 6mm bead of high strength, water resistant silicone adhesive to create 40mm diameter circles of adhesive along the full length and width of the panel. Also apply a 6mm bead of the adhesive around the perimeter of the panel.

STEP 8: JOINING PANELS

To join DecoSplash® panels joining strips are available for corner joints and wall joints as per visual:



STEP 9: PANEL SEALANT

Seal the DecoSplash® panel where the panel meets other surfaces eg. shower recesses, bathroom vanities, internal corners, with translucent wet area silicone.

STEP 10: PANEL CLEAN UP

After the splashback is fitted and the adhesive is cured, remove the outer protective film or masking tape in one continuous movement to achieve the best finish. A warm water detergent can be used to wipe down finished panels to remove excess silicone before it dries.

WHAT IS DECOSPLASH® MADE OF?

DecoSplash® is a solid metal (2mm aluminium) splashback, which is coated with a durable polyurethane powder coating.

The DecoSplash® product is made using a process called sublimation. The durable polyurethane powder coating is first applied to the aluminium and then photographic images are sublimated into the powder coating layer.

DecoSplash® process patent pending.

IS DECOSPLASH® DURABLE AND EASY TO CLEAN?

The DecoSplash® polyurethane powder coating is very durable and easy to clean. The best way to think about DecoSplash® is that it is like a non-stick frypan. It is robust and you only need to wipe it over with a damp cloth or a mild detergent to clean and unlike glass, it does not leave streaks.

WHAT HAPPENS IF I SCRATCH IT?

The design or image penetrates the full depth of the powder coating, so a surface scratch can simply be polished out as you would do with a scratch on your car.

CAN I USE DECOSPLASH® BEHIND A GAS COOKTOP?

Yes. DecoSplash® is made of solid aluminium which is a non-combustible material. The finish is baked on in an oven and is unaffected by heat used in cooking. Aluminium is a very good conductor of heat, which means that any heat generated from cooking will be quickly and evenly dissipated over the whole surface area of the splashback, and the splashback will remain cool.

DO I NEED TO USE A FIRE RETARDANT MATERIAL BEHIND THE SPLASHBACK?

Glass is a poor conductor of heat so heat builds up behind a cooktop, and therefore a non-combustible fibre cement sheet is required behind a glass splashback. Because aluminium is a very good conductor of heat and is non-combustible, a fibre cement sheet is not required behind DecoSplash®, although it is normal to line kitchen walls with a fire retardant grade of 10mm plasterboard.

CAN I USE DECOSPLASH® IN AN OUTDOOR KITCHEN?

Yes, DecoSplash® is ideal for outdoor kitchens. It is unaffected by the weather and is UV stable.

HOW IS DECOSPLASH® INSTALLED?

DecoSplash® is easy to install and is fixed to the wall using silicone or a construction adhesive and/or double sided tape.

DecoSplash® can be installed onto plasterboard, fibre cement sheeting and in the case of bathrooms, it can be installed directly into studs.

WHAT ABOUT HOLES FOR POWER POINTS OR TAPS?

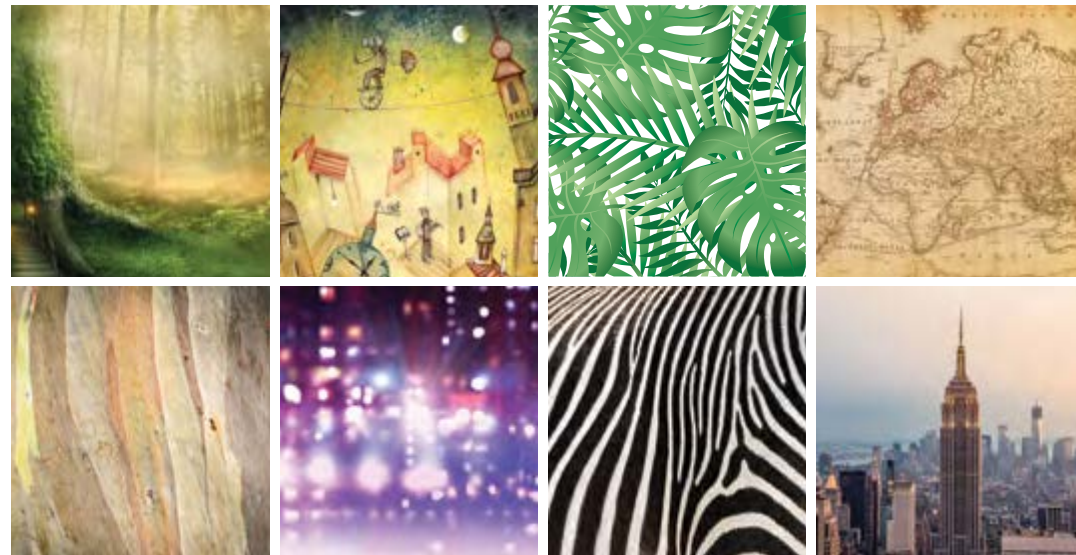
Aluminium sheet is easy to work with, and holes can be cut on site using standard tools. DecoSplash® can also be cut or trimmed using standard tools.

HOW ARE EDGES OR CORNERS FINISHED?

Edges and corners can be finished using silicone, and a black edge strip is also available.

DOES DECOSPLASH® HAVE A WARRANTY?

Yes, DecoSplash® comes with a 10 year warranty in accordance with Australian Standards AS3715 and Qualicoat.



STANDARDS COMPLIANCE

DecoSplash® fully complies with all of the relevant Australian and International Standards for Splashbacks.

1) POWDER COATED SURFACE.

Qualicoat is the international standard for quality assurance in powder coating, and Qualicoat sets out different levels of durability for powder coating. The DecoSplash® powder coated surface is applied by licensed Qualicoat applicators and complies with Class 2 “Super Durable” requirements, which is 50% more durable than standard powder coating. In addition, DecoSplash® fully complies with the requirements of the Australian Standard for powder coating, AS 3715.

2) AUSTRALIAN CONSTRUCTION CODE (BCA)

The BCA sets out requirements for non-combustible materials that are used in building construction. DecoSplash® has been tested at the CSIRO Building Research Station to AS 1530.3 and complies with the BCA requirements as a “non-combustible” material.

3) GAS REGULATIONS.

When gas cooktops are used, splashbacks must comply with the Australian Standard for the installation of gas appliances, which is the Gas Regulations AS 5601.1. This standard sets out the requirements for Fire Resistant Materials and the requirements for the protection of combustible surfaces. DecoSplash® fully complies with the requirements of AS 5601.1 as a Fire Resistant Material, however it is recommended that gas cooktops are installed with a minimum distance of 200mm from the splashback to the back gas hob.

All types of electric cooktops can be installed with DecoSplash®, and a minimum distance of 100 mm from the splashback is recommended.

4) POWER POINTS.

Power points sold in Australia by major Australian suppliers are designed for installation with metal in accordance with the Electrical Standard AS 3000. However, the installation **MUST** be carried out by a licensed electrical contractor in every case. Power points are designed to be electrically isolated from the metal surface, however, as an additional safety measure, an earth wire can be fitted to the splashback as shown in the adjacent photo. The fitting of the optional earth wire is recommended.

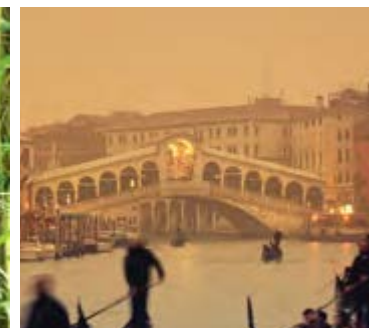
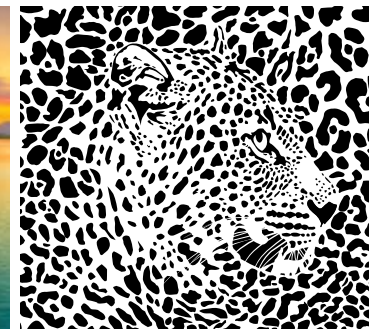
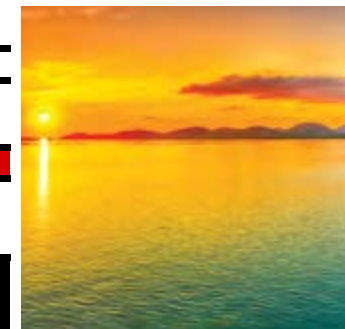
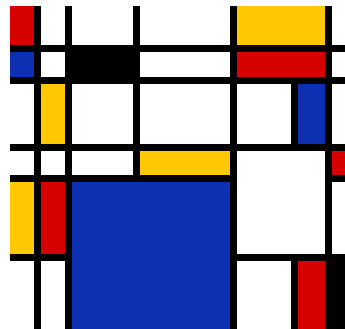
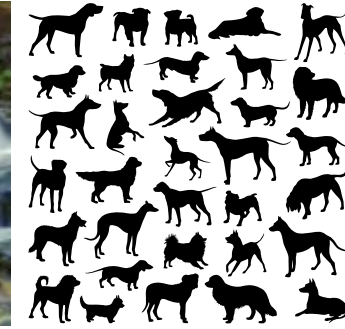
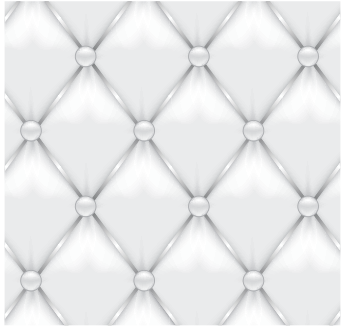


Power Point Installation – showing recommended earth wire



Power Point Installation – Front View

FUNDAMENTALS



DECOSPLASH IS PROUDLY DISTRIBUTED BY LINCOLN SENTRY

NATIONAL CUSTOMER SERVICE

P: 1300 551 919

F: 1300 739 656

decosales@lincolnsentry.com.au

Brisbane

48 Weaver Street
Coopers Plains QLD 4108

Gold Coast

3/481 Scottsdale Drive
Varsity Lakes QLD 4227

Toowoomba

400 Taylor Street
Toowoomba QLD 4350

Coffs Harbour

9 Wingara Drive
Coffs Harbour NSW 2450

Sunshine Coast

22 Technology Drive
Kawana Waters QLD 4575

Bundaberg

Shed 3, 4 Activity Street
Bundaberg QLD 4670

Mackay

Shed 1/9 Peace Street
Mackay QLD 4740

Rockhampton

170 Alexandra Street
North Rockhampton QLD 4701

Cairns

123 - 125 Brown Street
Bungalow QLD 4870

Townsville

14 Carmel Street
Garbutt QLD 4814

Darwin

4/31 Albatross Street
Winnellie NT 0820

Prestons

10 Jessica Place
Prestons NSW 2170

Newcastle

110 Munibung Road
Cardiff NSW 2285

Canberra

33 Collie Street
Fyshwick ACT 2609

Melbourne

73 Barry Street
Bayswater VIC 3153

Adelaide

8 Trizolpic Court
Lonsdale SA 5160

Geelong

14 Hede Street
South Geelong VIC 3220

Bendigo

5 Prospect Road
Bendigo East VIC 3550

Albury

417 Swift Street
Albury NSW 2640

Launceston

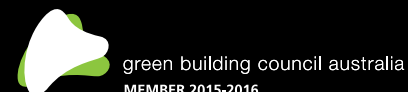
Factory 10-11, 8 Trotters Lane
Prospect TAS 7250

Perth

Unit 2, 121 Beringarra Avenue
Malaga WA 6090

Bunbury

34 Clifford Street
Bunbury WA 6230



www.deco.net.au
www.lincolnsentry.com.au
www.facebook.com/aluminiumsplashbacks

BR0065CH2