

Laminex®

Minerals

Benchtops



Design for life.

Laminex® has been part of Australian life for more than 80 years. Our commitment to design, innovation, quality and sustainability endures, that's why we continue to produce a beautifully curated collection of decorative surfaces. They're perfect for a wide range of styles and applications, and are designed to stand up to the rigours of everyday life.



COVER: Island benchtop and feature wall panel is Laminex Nero Grafite with island panel and rangehood in Laminex Brushed Bronze. Rear benchtop and cabinetry is Laminex AbsoluteMatte Black and frame is Laminex Aged Walnut. Sink and tap Oliver Spectra Double Bowl Stainless and Vilo Pull Out Mixer. Smeg Victoria Cooker. ABOVE: Vanity top and splashback features Laminex Carrara Marble. Tall cabinets are Laminex Calm White and vanity shelf is Laminex Classic Oak.

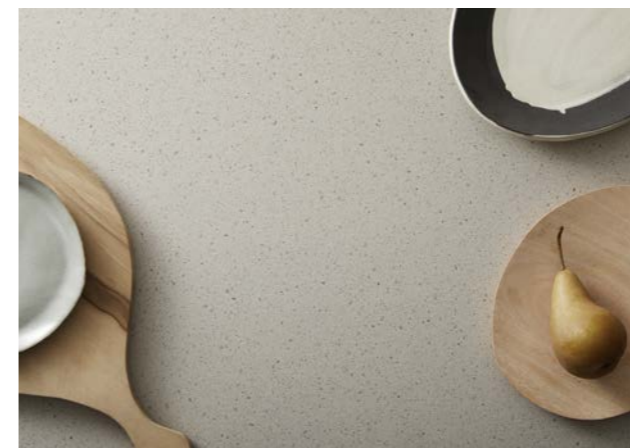
Navigating the range.

We know design decisions can be challenging, so to help make things easier we have brought together a timeless range of Mineral laminates that are split into three categories – Veins, Aggregates and Concretes.



Veins

From subtle to dramatic veining, our marble inspired décors range from delicate to large-scale designs adding sophistication to any space.



Aggregates

Inspired by natural stone, quartz and terrazzo styles, the range extends from ultrafine granular detailing to strong, statement-making designs.



Concretes

Polished and unrefined, concrete décors range from smooth and sleek surfaces to weathered and textural styles.

Flat-lays feature Laminex Carrara Bianco, Laminex Limed Concrete and Laminex Elemental Ash.

Laminex laminates combine timeless and contemporary colours and finishes with the durability to stay looking pristine in the most demanding interior environments. They're hardwearing, stain resistant, easy to clean, and rigorously tested to ensure that they satisfy Australian standards for surface materials.



Island benchtop features **Laminex Carrara Bianco**. Rear benchtop and splashback is **Essastone Ash Concrete**. Base and tower cabinetry is **Laminex Polar White** and overhead cabinetry is **Laminex Waxed Maple**.

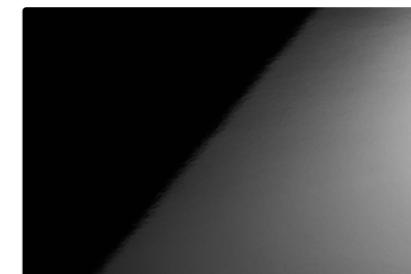
Laminex Finishes.

The Laminex Minerals are available in a range of products and finishes for various applications. Here's a guide to each of the laminate finishes:



Natural Finish

A low sheen, smooth touch surface that is a durable and low maintenance option for benchtops and cabinetry.



DiamondGloss® Finish

A stunning high gloss benchtop surface, polished to perfection giving it a brilliance that is both striking and refined.

Legend **DG** DiamondGloss Finish **N** Natural Finish

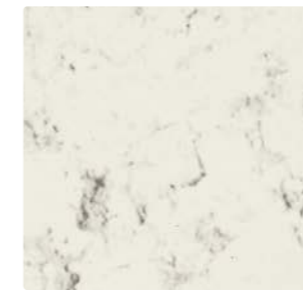
NOTE: Not all finishes and décors are suitable for all applications. Please refer to the Technical Data Sheets (TDS) at laminex.com.au for full application and technical information.

Veins.

This stunning range of natural stone and marble inspired décors feature soft movement through to large-scale, dramatic veining. Perfect for both contemporary and classic spaces, these timeless décors create standout style.



Carrara Delicata
N



Crema Venato
N DG



Carrara Marble
N DG



Carrara Bianco
N DG



White Valencia
N DG



Catalana Marble
N



Avenza Bianco
N DG



Pietra Cloud
N



Neo Cloud
N



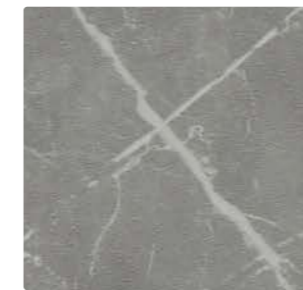
Figured Limestone
N



Marmor Torino
N



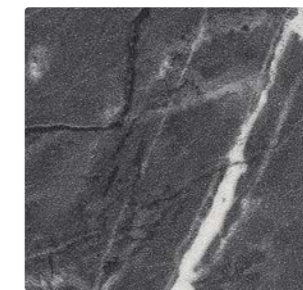
Neo Tornado
N



Grigio Grafite
N DG



Ferro Grafite
N



Andalucian Marble
N



Nero Grafite
N



Black Marble
N DG

Legend DG DiamondGloss Finish N Natural Finish

OPPOSITE: Island benchtop and feature wall panel is **Laminex Nero Grafite**. Rear benchtop and cabinetry is **Laminex AbsoluteMatte Black** and rangehood features **Laminex Brushed Bronze**. Sink and tap **Oliveri Spectra Double Bowl Stainless** and **Vilo Pull Out Mixer**. **Smeg Victoria Cooker**.

Aggregates.

Varying colour, contrast and particle size can radically alter the look and visual appeal of aggregate style surfaces. Strong flecks and vivid tones create a contemporary mood while softer hues with subtle aggregation deliver a calm aesthetic.



Benchtop features Laminex Pure Mineralstone II and cabinetry is Laminex Green Slate.



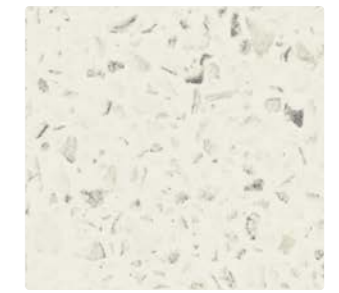
Fresh Snow
N DG



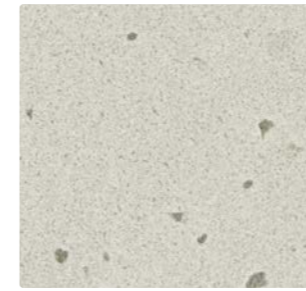
New Ash Dust
N



Natural Quartz
N



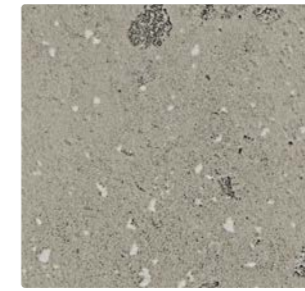
Pure Mineralstone II
N DG



Terrazzino Perlato
N



Raw Zinc
N DG



Tumbled Terrazzo
N



Limed Concrete
N DG



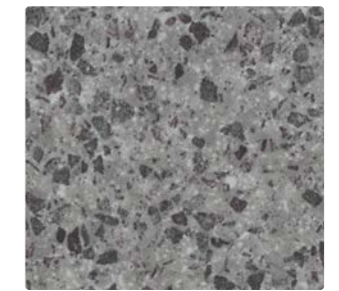
Sand Pebble
N



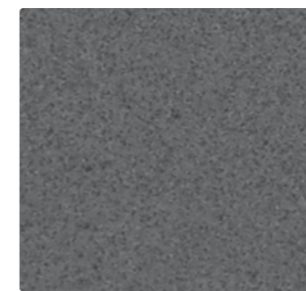
Brook Pebble
N



Kashmir Granite
N



River Pebble
N



Raw Nickel
N DG



Greystone
N

Concretes.

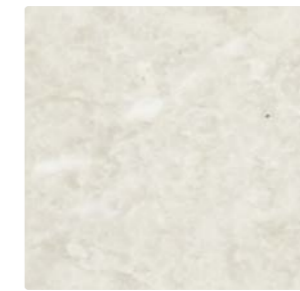
This range takes inspiration from weathered, industrial concrete to softer, more refined smooth cement. These décors are perfect for a grand statement and complement warm based timbers for the perfect urban or contemporary space.



Island and rear benchtop features **Laminex Elemental Ash**. Overhead cabinetry is **Laminex Lava Grey** and rear base cabinetry features **Laminex Black**.



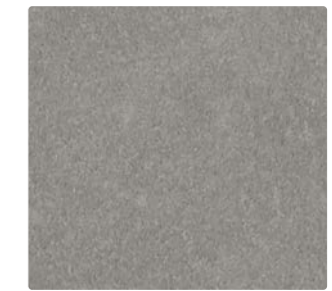
Pearl Concrete
N



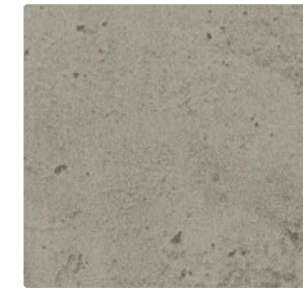
Antarctic Stone
N



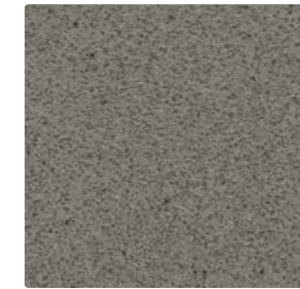
Elemental Ash
N



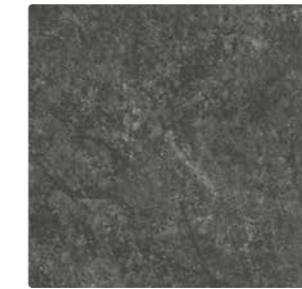
Basalt
N



Manhattan Concrete
N



Urban Pezzato
N



Jordan Stone
N

Visit us

For location of your closest showroom or more information visit laminex.com.au

Product sample

For a sample visit laminex.com.au

Call Us

For trade enquiries **132 136**

Follow Us

 facebook.com/Laminexau

 au.pinterest.com/Laminexau

 instagram.com/Laminexau

 youtube.com/Laminexau

Laminex and Essastone® are manufactured, marketed and distributed by Laminex Group Pty Limited ABN 98 004 093 092, trading as Laminex. The colours and finishes for all imagery and product swatches in this brochure may vary due to paper, printing processes and photographic lighting. For an accurate representation of the product, please view a physical sample. Please obtain a copy of the terms and conditions of the applicable warranties from laminex.com.au. All warranties are in addition to any rights that may exist under the Australian Consumer Law. Laminex®, Impressions™, Essastone®, DiamondGloss®.

LNX0180
LAM4104 05/21

Laminex®